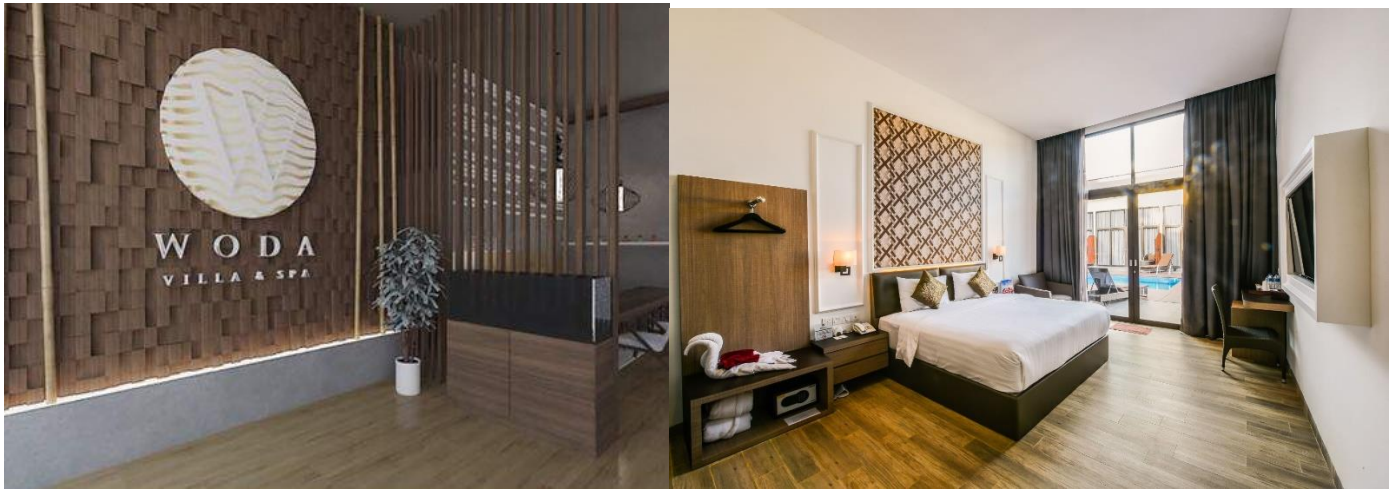


## 2D1N Woda Villa, Batam



GV2 Woda Suite	Adult				Child				
	Single		Twin / Triple		Half Twin		With Bed	No Bed	Infant
	WD	WE	WD	WE	WD	WE			
2D1N Tour Package	S\$113	S\$ 127	S\$ 75	S\$ 82	S\$ 71	S\$ 78	S\$ 65	S\$ 39	S\$ 32
2D1N Free & Easy	S\$103	S\$ 117	S\$ 65	S\$ 72	S\$ 63	S\$ 70	S\$ 59	S\$ 35	S\$ 32
Extension Night	S\$97	S\$ 111	S\$ 59	S\$ 66	S\$ 59	S\$ 66	S\$ 53	S\$ 28	S\$ 20
Per person per night									

Tour Package Include of :	Free & Easy Package Include of :	Extension Night Includes of :
<ul style="list-style-type: none"> <li>- Return ferry ticket (Sin/Bth/Sin)</li> <li>- 1 night hotel accommodation</li> <li>- Breakfast</li> <li>- 1 day Batam city &amp; shopping tour</li> <li>- Seafood lunch</li> <li>- Land transfer</li> <li>- Local guide assist</li> </ul>	<ul style="list-style-type: none"> <li>- Return ferry ticket (Sin/Bth/Sin)</li> <li>- 1 night hotel accommodation</li> <li>- Breakfast</li> <li>- Land transfer (pier/hotel/pier)</li> <li>- Local guide assist</li> </ul>	<ul style="list-style-type: none"> <li>- 1 night hotel accommodation</li> <li>- Breakfast</li> </ul>

### Tour / Free & Easy Package Exclude of:

- Singapore PDF & Fuel Surcharge of S\$21/pax (subject to change)
- Batam Terminal Fee of S\$8/pax (subject to change)
- Batam Guide & Driver Tipping of S\$2/pax/day
- Personal insurance, Room service, Optional tours, Porterage fee, Visa fee, and all expenses of personal nature

### P2P Travel Exchange Pte Ltd

No.1 Brooke Road #B1-30 Katong Plaza Singapore 429979

Tel: (65) 6226 0660

Website: www.p2ptravel.sg

Co. Reg. No.: 200107190E / STB No.: 01222

**Upgrading Room Surcharge:**

- Woda Signature Room S\$45/r/n
- Woda Signature Plus Room S\$65/r/n

**Peak Surcharge:**

- S\$38/r/n is applicable from weekend rate from 1 May, 4 – 6 June, 9 – 12 Aug, 26 – 27 Oct, 21, 22, 23, 24, 25, 28, 29, 30, 31 Dec 2019

**Fixed Departure:**

- By Tour Package is 0900 hrs
- By Free & Easy Package is 0900, 1020, 1320, 1450 & 1720 hrs
- Pick up from hotel to ferry terminal is all fixed at 1200 hrs

**Surcharge for early or late departure for land transfer (min. 02 pax)**

- 8am to 6pm S\$5/pax/trip
- 6pm to 8pm S\$10/pax/trip
- After 9pm S\$20/pax/trip

**Remarks:**

- Validity from 1 January till 30 December 2019
- Hotel room's definition for Weekday is Sunday to Thursday and Weekend is Friday to Saturday and eve of PH & PH
- Rates are subject to change without prior notice